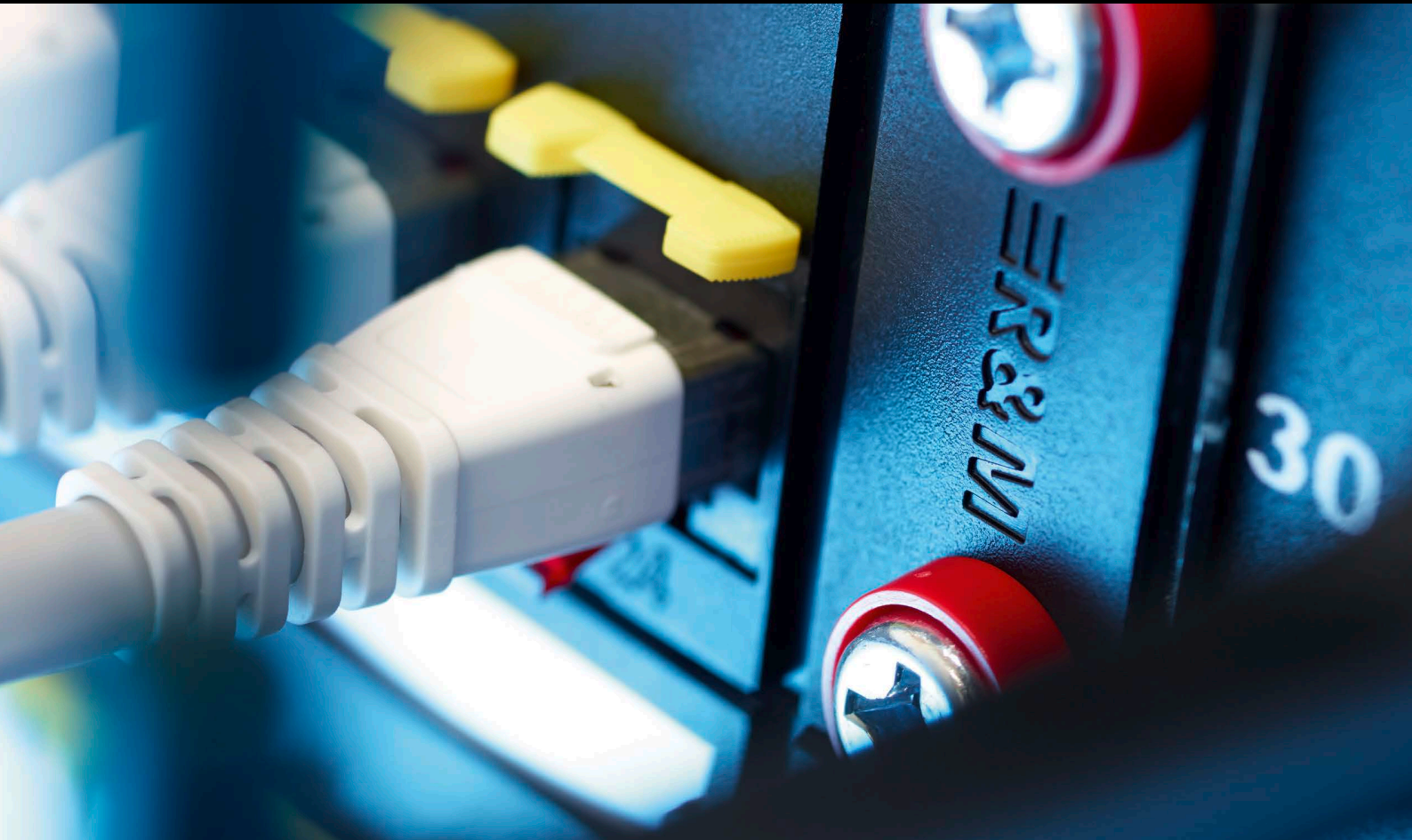


1U RJ45 patch panels 24 ports



More compact

 **R&M**

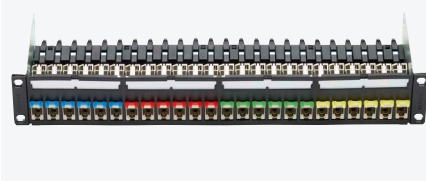
Convincing cabling solutions

Simpler to install

Lean design

Clear-cut, lean and functional: That is what you can expect from the modern 19" family from R&M. The 1U RJ45 patch panels with 24 ports offer everything you need for effortless copper cabling – Cat. 6_A in one row, Cat. 5e and Cat. 6 staggered.

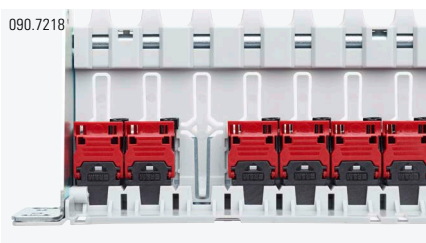
090.7217



Fast installation

You can assemble the 1U RJ45 patch panel in a matter of minutes without tools. Pre-terminated cables and jacks snap directly into the frame. You can change them with a flick of your wrist. Shielded modules ground themselves automatically.

090.7218



Sturdy lightweight construction

Thanks to high-tech plastic, the patch panels are 60 percent lighter than their predecessors. The Cat. 6_A version has a hybrid body made of steel. Installation depths of 80 to 100 mm cut the space used by 50 percent compared with previous models.

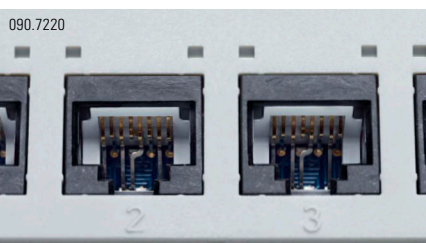
090.7219



Horizontal orientation

The connection modules are horizontal and their contact sets are positioned at the top. That means the pressure is evenly distributed on the jack and no dust gathers. The advantage is that the contact is always reliable.

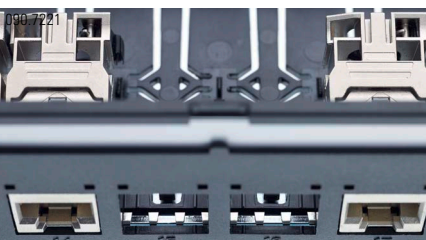
090.7220

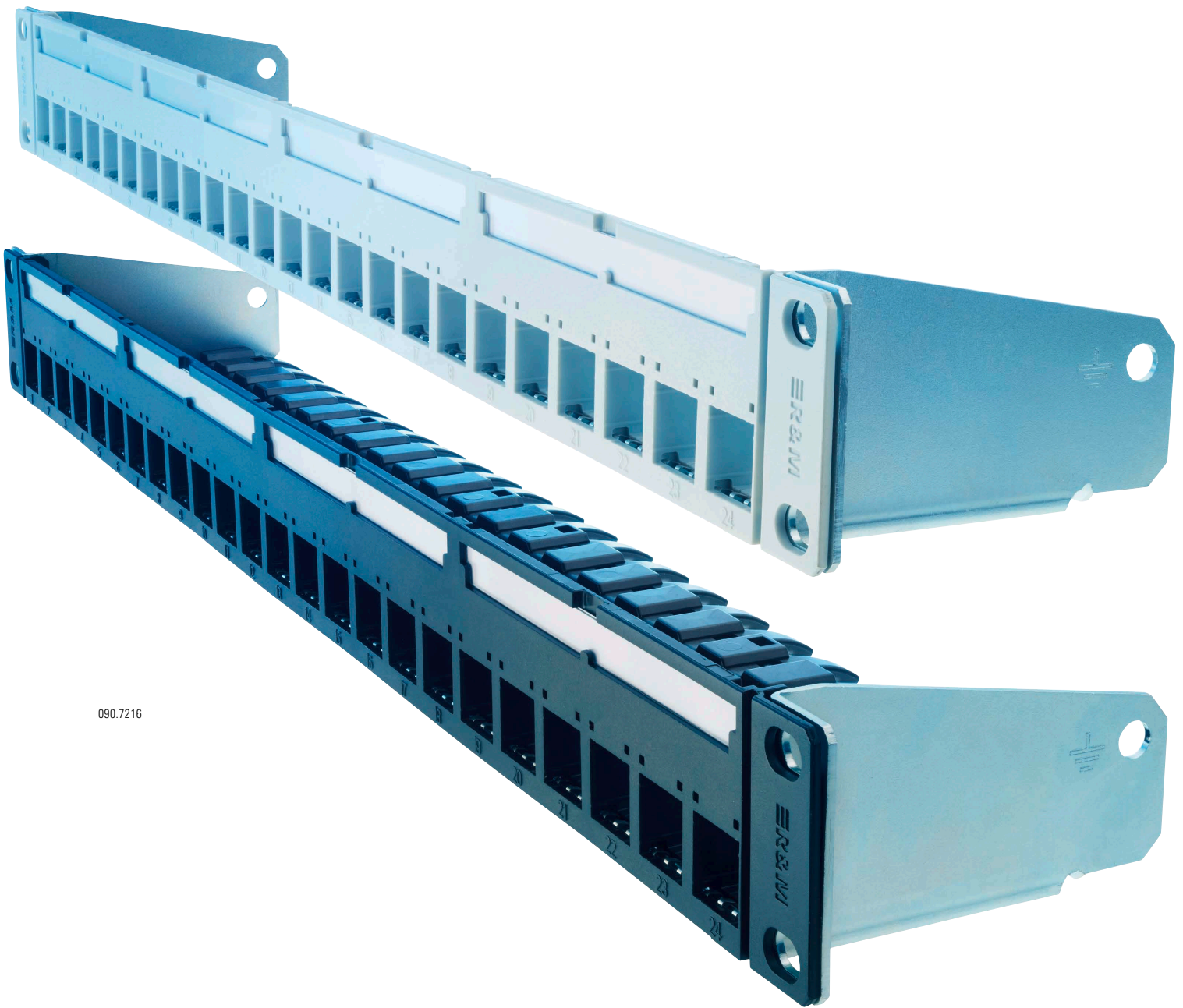


Well shielded

For the Cat. 6_A version, all 24 jacks are in a single row. That simplifies operation. The compact design of the innovative Cat. 6_A module from R&M makes it all possible. High quality shielding technology protects against crosstalk.

090.7221





090.7216

Suitable installation

Favorable solution for offices and buildings

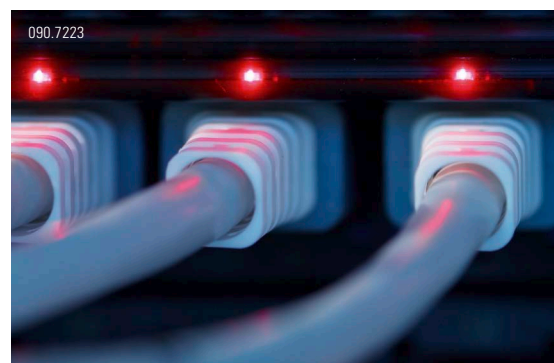
The 1U RJ45 patch panels offer a suitable distribution platform for structured cabling for customers looking for compact basic equipment solutions that retain their value and reflect cost awareness. They are used in offices, plants and commercial buildings of all kinds, banks, universities, clinics or recreational facilities. The patch panels cover all typical requirements of Cat. 5e, Cat. 6 and Cat. 6_A copper cabling, shielded or unshielded. The connection capacity increases by 20 percent calculated over three units and compared to predecessor models. The costs per port can be anywhere lower than those of comparable predecessors depending on the configuration.

Clear-cut approach for small data centers

In this age of cloud computing and 10 gigabit Ethernet, it is precisely the small and medium-sized data centers that expect efficient and productive cabling solutions. The R&M patch panel family for 1U/24-port infrastructures helps you save space, boost performance and improve operational reliability in crucial places. The Cat. 6_A version is just the product to help you incorporate a clear-cut approach in your network cabinets. Fast installation techniques reduce the times needed for installation and conversion. The permanently integrated cable manager ensures stress-free cable installation for consistent performance. Contact sets are perfectly shielded and positioned on top. That way they promote signal transmission free of interference.

More secure network

Availability is a central criterion for the success of local data networks. That is truer now than ever before. The way to achieve availability is to combine top quality equipment with error-free administration. The 1U RJ45 patch panels support network managers with compelling R&M quality and all the safety and security features contributing to one hundred percent availability. Port numbers and colored clips from the R&M security system help to ensure exact allocation of connections. Despite their compact design, these panels leave space for individual, systematic labeling. Moreover, the Cat. 6_A version is compatible with the R&M *inteliPhy* automatic infrastructure management system.



Get more

get more

More flexibility

- Cross-generational solution
- Shielded or unshielded
- High packing density in the rack

More efficiency

- Saves space, time and costs
- Easy to install and operate
- Effortless move, add and change processes

More security

- Triple visual coding
- Automatic grounding
- Stable performance



CABLING IN A NEW ERA

Copper structured cabling is entering a new era. It has to pave the way to 10 gigabit Ethernet in data centers and office buildings and do so without any compromise. At the same time, it is supposed to support established infrastructures and transmission processes for a long time to come. It must keep the omnipresent Internet services one hundred percent available and running smoothly while meeting strict economic requirements. There is an answer to these challenges: 1U RJ45 patch panels from R&M, the modern 24-port solution for 19" racks. With this platform, network planners, installers and administrators can effortlessly lay the groundwork for the future of local networks.

STURDY AND COMPACT BASE

The 1U RJ45 patch panels serve as a standardized entry-level solution for planning and setting up 19" network distributors in copper cabling. R&M has developed a trend-setting product family for the classic 24-port setup. This family stands out for eight essential features:

- Modern lean design
- Suitable for Cat. 5e, Cat. 6 and Cat. 6_A
- Lightweight yet sturdy construction
- Small installation depth, compact shape
- Higher packing density in the rack
- Ingenious quick installation technique
- Reliable operations and contacting
- Lower costs per port

As such the 1U RJ45 patch panels from R&M satisfy all the requirements and requests a customer could have for planning a generation change in the rack.

EASY, QUICK AND RELIABLE

Convenient installation is a crucial advantage.

They are ideal, for example, in combination with pre-terminated installation cables and shielded connection modules. They can be snapped directly into the frame and are equally easy to remove. Grounding is automatic. The permanently integrated cable manager for stress relief ensures stress-free cable installation and consistent performance.

The horizontal jacks with contact sets on top provide optimum contact reliability, because the pressure is distributed uniformly in the contact jack when the plug is plugged into the jack. A functional package of security features helps network management. For automated monitoring, you can combine the Cat. 6_A version with the R&M*IntelliPhy* infrastructure management system.

ATTRACTIVE INVESTMENT

The space-saving plastic construction and the convenient installation also have an economical effect, as do the security advantages. The connection capacity rises. Installation and conversions can be taken care of much more quickly than before. That too saves money. Thanks to greater availability, the network makes better use of its capacity and becomes more productive. The costs per port for the modern R&M patch panels can be cut compared with earlier models depending on the configuration involved. So, it is well worthwhile to invest in a generation change.

Profit from the added value of high quality R&M products. Use the advantages of modular designs and place your trust in our experience. Our practical and innovative systems for data and communication networks are of the finest quality. We have been selling them successfully for 50 years as a consistent and independent supplier.

www.rdm.com

090.7215



Headquarters

Reichle & De-Massari AG
Binzstrasse 32
CHE-8620 Wetzikon/Switzerland
Phone +41 (0)44 933 81 11
Fax +41 (0)44 930 49 41

www.rdm.com