



Better Connected
Microfeatures Connectivity

Better Connected

Microfeatures Connectivity

Introduction

To define the quality / suitability of a plugged FO connection only via the IL / RL values, which are determined directly after the production of the patch cable or the pigment against a master plug under optimal measuring conditions, does not reflect the reality in operation sufficiently.

During operation, the connector is periodically or permanently exposed to influences that can impair the transmission characteristics.

Expectations of the FO connection

During installation

- ✓ Plug&Play
 - short installation time
 - «Pass» for the release of the channel with the first measurement

- ✓ no damage to adjacent plugs and couplings
 - with side load
 - under tensile load

For maintenance work in the network (MAC)

- ✓ Plug&Play
 - short installation time
 - «Pass» for the release of the channel with the first measurement

- ✓ No damage to adjacent plugs and couplings
 - with side load
 - under tensile load
 - easy cleaning

During operation

- ✓
 - temperature stability
 - Dimensional stability at elevated humidity or temperature
 - vibration resistance



Better Connected

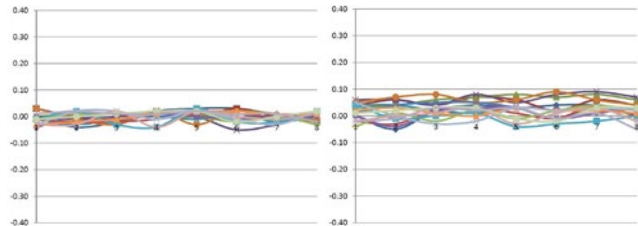
Microfeatures Connectivity

Microfeatures from R&M FO - Connectors

| Microfeature R&M Connectivity | Effect |
|-------------------------------|--------|
|-------------------------------|--------|

Form-stable plastics

030.6605 / 030.6606



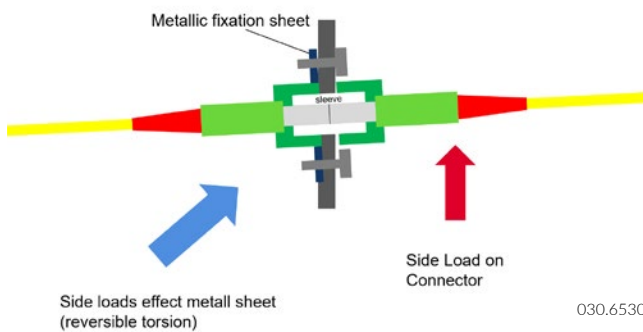
Behavior of R&M components

Behaviour with insufficient dimensional stability

Increased continuous temperature or high humidity can influence the dimensions of connectors and adapters, for example by absorbing moisture.

This can result in a deviation from the original transmission values.

Metal clip for screwable FO adapters



With tightly packed platforms, manipulation of a connector (MAC processes) can affect the adjacent patch cables and easily push them away (wiggling).

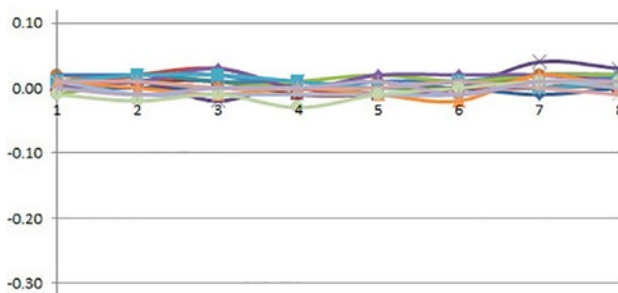
In the case of screwed FO couplings that are rigidly seated in the front panel, this lateral force has a direct effect via the plug on the plug ,plug ferrule plug! This results in transmission interruptions or, in the worst case, damage to the ceramic parts.

R&M couplings attenuate this force because the metal clip absorbs the movement and guides it away from the connector.

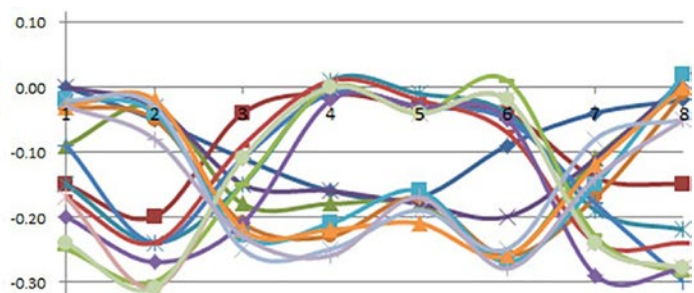
Tightly specified ceramic parts (sleeve and ferrule) and/or consistent tuning process during connector assembly

Low scattering of IL and RL values with repeated mating shortens installation and maintenance work.

No searching for the optimal Pigtail - Patchcord pairing, thanks to optimal each-to-each values - Plug&Play!



R&M plug-in connection



Mid-End plug-in connection

030.6607

Better Connected

Microfeatures Connectivity

Microfeature R&M Connectivity

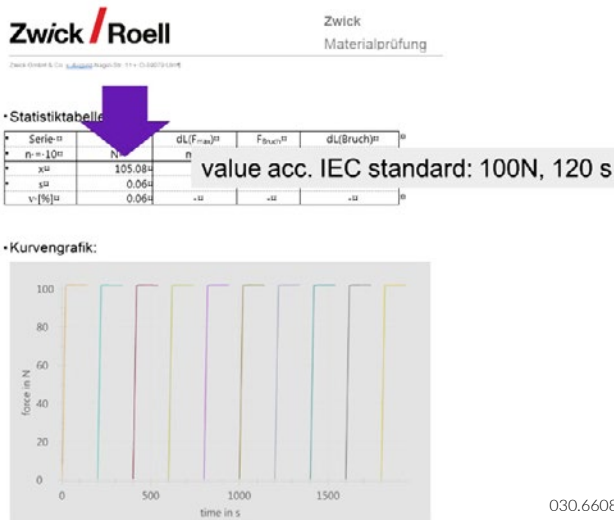
Effect

Reserve

R&M tests the critical mechanical loads of the plug-in components with higher loads than those specified in the data sheet.

R&M plug-in components remain reliable, even if higher loads are accidentally applied to the connector at short notice than specified.

The risk of damage and subsequent replacement of plug-in components is greatly reduced.

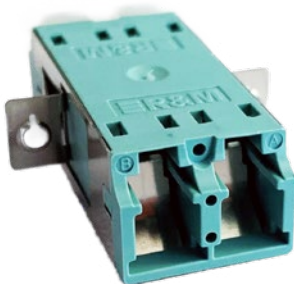


Cleaning tools

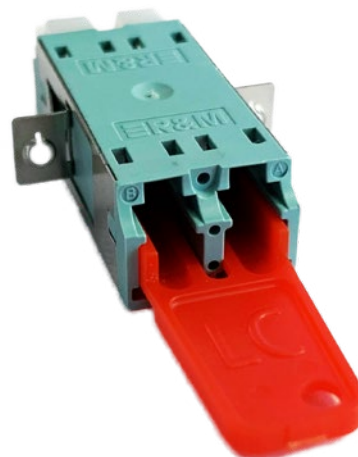
R&M offers E-2000 and LC duplex couplings in general, SC simplex couplings optionally with integrated laser protection.

No restriction on the cleaning equipment for FO couplings.

R&M offers a key set that facilitates cleaning of the laser-protected coupling.



030.6609



030.6610