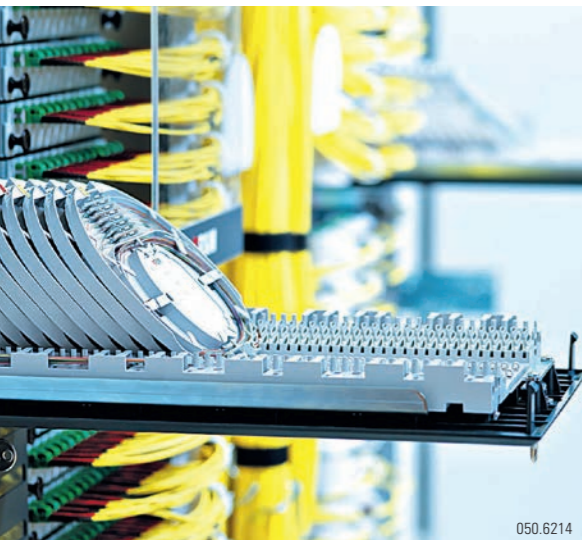


# Muscat International Airport Lays the Foundation for Soaring Growth

In anticipation of its ambitious plans to quadruple its passenger capacity through systematic expansion, Muscat International Airport has implemented a fiber-optic backbone network, based on R&M's solutions.



050.6214

Muscat International Airport is the hub for the national carrier Oman Air and is the gateway to Oman, improving connections to international destinations such as the Gulf, the Middle East, Europe and the Far East. The new terminal, a state-of-the-art facility with 28 contact gates, has been designed to handle a flow of 12 million annual passengers, with a net floor area of 340 000 square meters.

The airport's new network infrastructure will serve as the platform upon which all its internal and external tele-

communications and other operational applications and services will run.

As a 24/7 operation, Muscat International Airport requires its infrastructure to meet and exceed the highest standards of reliability. This emphasis on quality was a key reason behind the company's decision to select R&M as its solution vendor. The role of OHI Telecom, a long-standing R&M partner, was also a major factor in this decision as the company is an approved contractor for a number of prominent government organizations in the country.



090.6860



050.6215



050.6216

The new fiber backbone network of the airport is capable of supporting the latest 40GbE standard and can even support 100GbE connectivity requirements. This means that the network will be capable of meeting the airport's performance requirements for at least the next twenty years. In all, 15 buildings have been connected, including the terminal, the Air Traffic Control (ATC) tower as well as the two data centers and the telecom exchanges of Omantel and Ooredoo.

### Customized solution, developed and delivered with high speed

A major component in this project was the R&M Optical Distribution Frame SCM solution which offers high-density fiber connectivity in a compact and robust design. The consultant requested a 19" mountable ODF splice/patch panel with a capacity of 288 and 432 fiber terminations. R&M fast-tracked development and delivery of its 19" Combi-MODULE with lightning speed. Furthermore, R&M developed a new 19" mountable splice rack capable of housing 288 splices, in a 4U high unit

panel using an SCM splice tray system. For increased reliability, the fiber adapters were used as they feature integrated, spring-loaded shutters for dust and scratch protection.

OHI Telecom was responsible for both the design and installation of the network and executed these tasks with a high level of skill and professionalism. The new airport will have the capacity to handle 12 million passengers annually. Further expansions planned will boost the airport's capacity to 24, 36 and 48 million passengers as per the demand. "Muscat International Airport has demonstrated admirable foresight in deploying a state-of-the-art network that will serve as a robust base upon which it can deploy a number of services that improve the passenger experience," said R. Govindraj, General Manager at OHI telecommunications. ■



050.5968  
**Samuel Godfrey**  
 R&M Middle East, Turkey & Africa  
 samuel.godfrey@rdm.com