



Cat.6 Patch Cords

R&Mfreenet Cat.6 patch cords are used for connecting the network equipment to patch panels and telecommunications outlets. They are suitable for frequencies of up to 250 MHz.

Features of Cat.6 Patch Cord

- Fulfills the requirements of Category 6, Class E (250MHz) according to the present standard of the ISO/IEC 11801.
- Complies with the Category 6 specifications of the IEC 60603-7-4 / IEC 60603-7-5 components standard with the Cat.6 connection module.
- Supports PoE (IEEE 802.3af), PoEP (IEEE 802.3at), 4Ppoe (IEEE 802.3bt) and is compatible to IEC 60512-99-001/002.
- The flexible cable meets the extended TCL specification of level 2 according to IEC 61156-6 for frequencies above 100 MHz.
- Tested according to IEC 61935-2
- Each individual patch cord is tested.
- Can also be used as Cat.5e (backwards compatible).
- Colour coding for service identification.
- Ultra stable strain relief.
- Strain relief according to TIA/EIA-568-B.1-1.
- Slim jack dimensions: 41.1 x 11.7 x 6.6mm (length x width x depth).
- Lengths from 0.5 to 20m available.
- Impedance of 100Ω.
- LSZH and LSFRZH versions.
- R&M security system.
- R&M environment system.
- 3P certified (in channel)



Cat.6 Patch Cords Data Sheet

Materials

Plug Housing	Contacts	Contact Plating	Shielding
UL 94-V0 polycarbonate	Bronze (CuSn6)	0,7 µm selective gold plate	Tin-plated brass

Electrical Characteristics

General	Current Rating	Dielectric Withstanding Voltage	Insulation Resistance @20°C 500VDC
Compliant to 60603-7	1.5A @ 25°C	1000 VDC	5000 MΩ * km

Mechanical Characteristics

Plug Tolerances and Dimensions
Compliant to IEC 60603-7

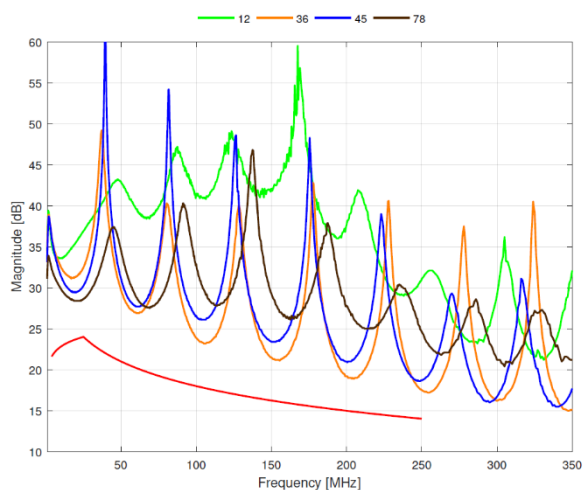
Environmental Characteristics

Operating Temperature
-20°C to +60°C

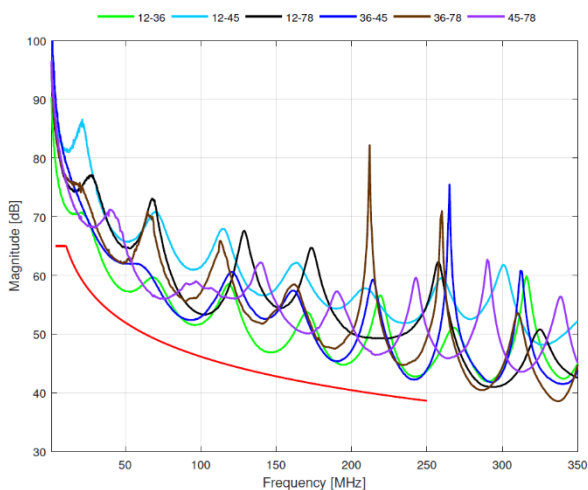
Patch Cord Characteristics Cat.6

	U/UTP	S/FTP
Inner conductor diameter	AWG24/7	AWG26/7
Number of pairs	4	4
Screen per pair	None	AL/ Foil
Outer screen	None	Cu-braid
Jacket	LSZH	LSFRZH
Bending radius	≥35mm operation (without load) ≥60mm installation (with load)	≥35mm operation (without load) ≥60mm installation (with load)
Outer diameter	max. 6.0 mm	max. 6.0 mm

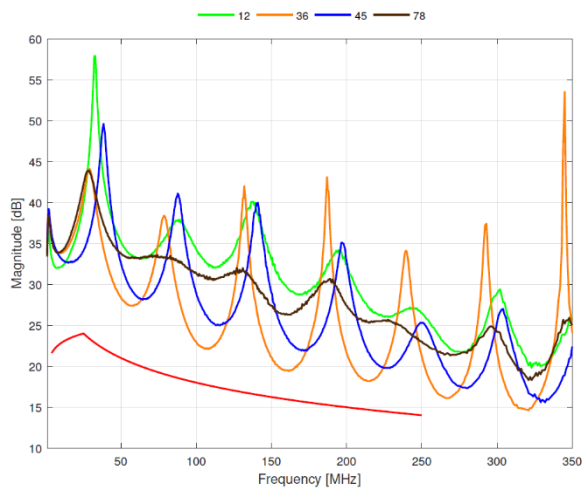
Typical Return Loss Cat.6 U/UTP patch cord 2m



Typical NEXT Cat.6 U/UTP patch cord 2m



Typical Return Loss Cat.6 S/FTP patch cord 2m



Typical NEXT Cat.6 S/FTP patch cord 2m

