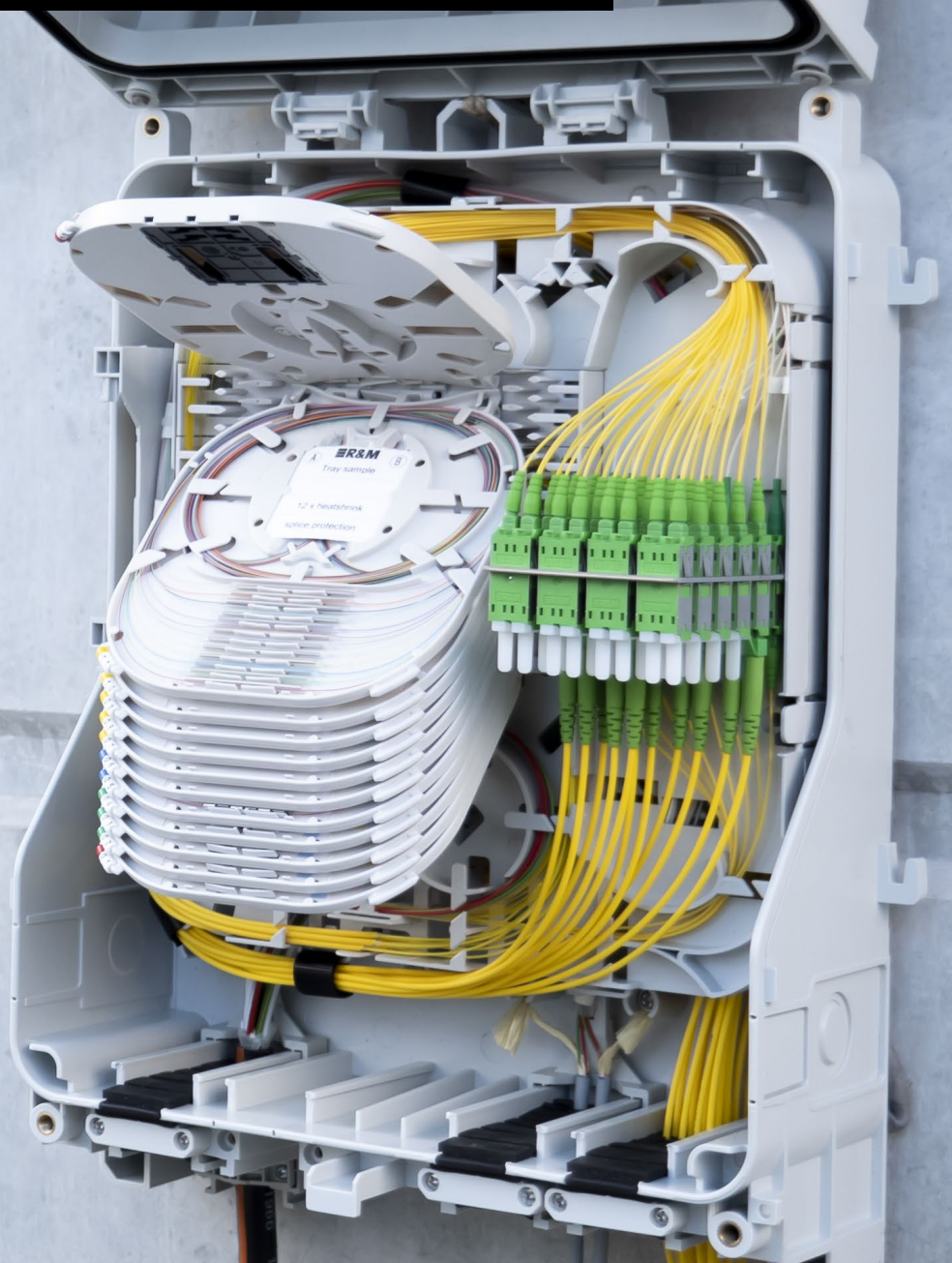


Polaris-box Family

Multifunctional for a flexible
fiber optic termination

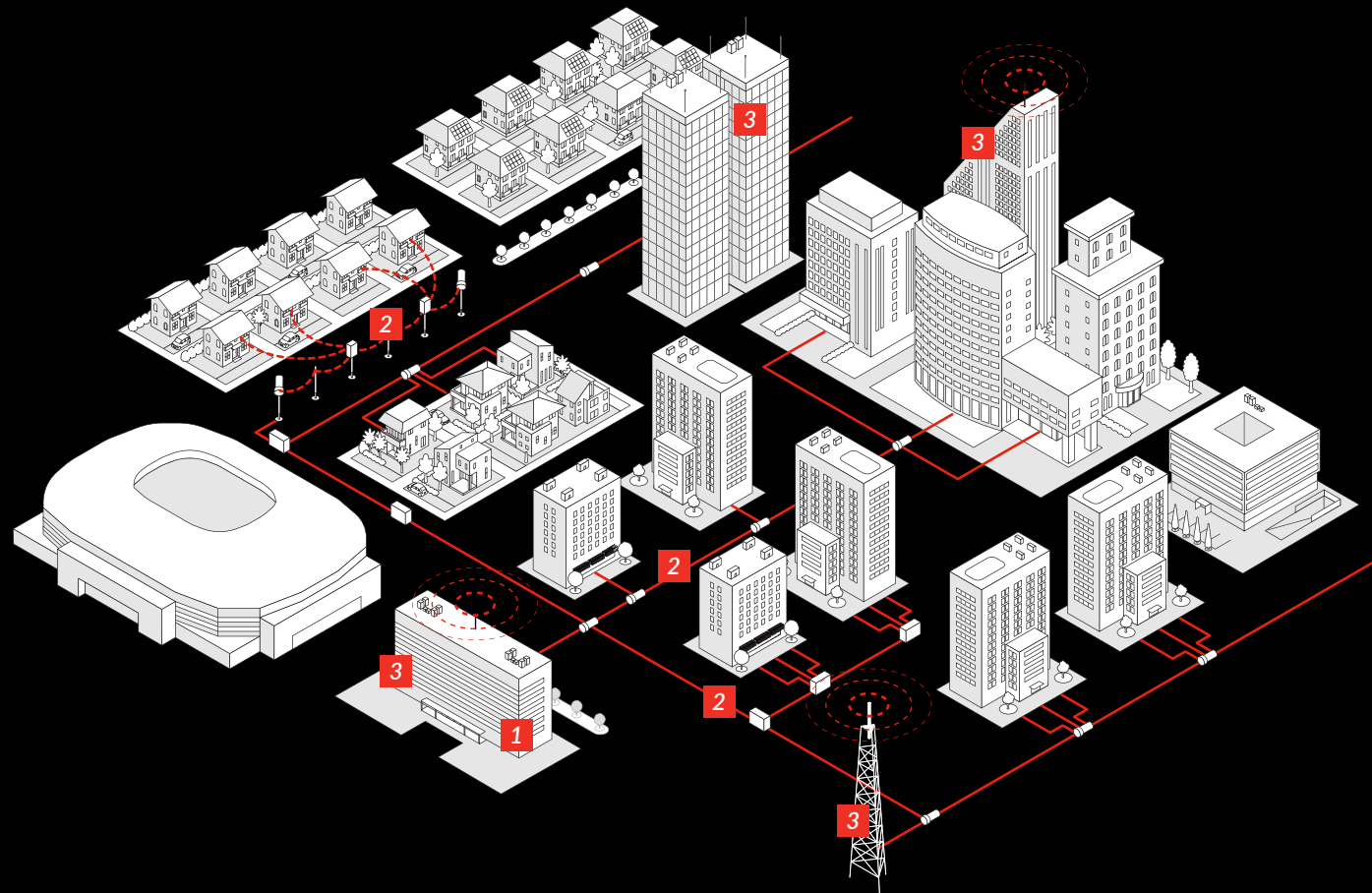




Your next generation
FO-Boxes

R&M – Building FTTX Networks

For global customers in different industries



1

Central office

Customer specific solutions for easy assembly, future-proof and effective operation. Our optical distribution frames PRIME ODF and SCM ODF offer modular system solutions with plenty of different elements, complemented by a professional planning consultancy.

2

Outside plant

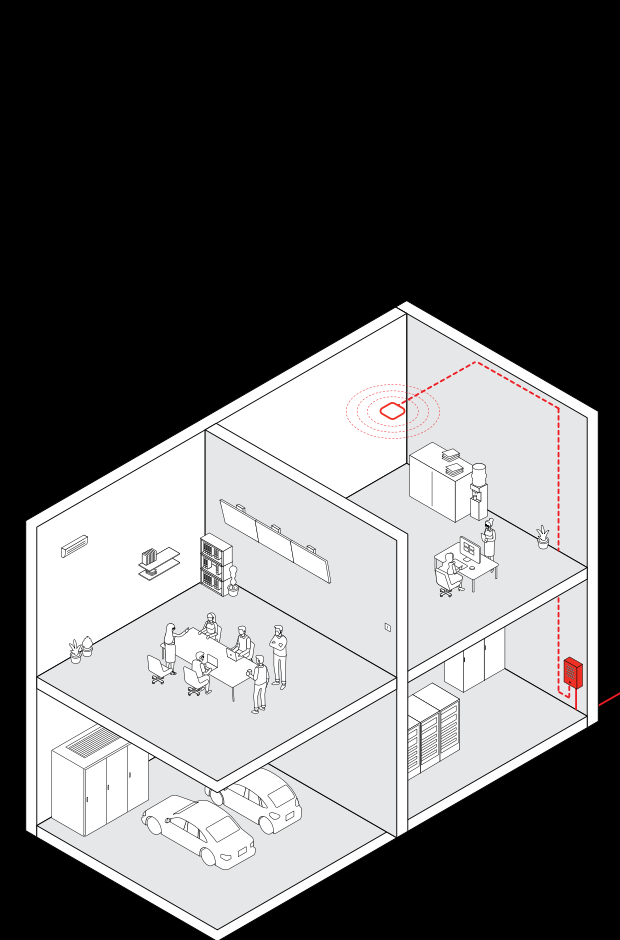
Complete portfolio of robust street cabinets, closures and distribution boxes offering state-of-the-art technology in fiber connectivity and cable management. The different product platforms support various cable types and optical network topologies

3

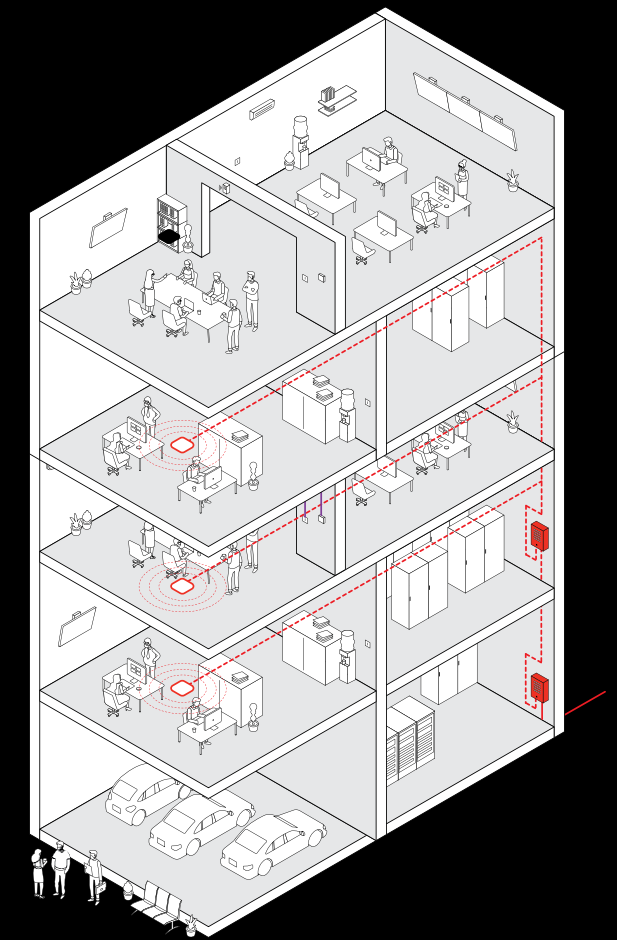
Customer premises, buildings and cell sites

Efficient solutions for different buildings and urban infrastructure with fiber optic connectivity. Building entry points for indoor or outdoor use, realized with various box family. Compact, flexible and modular solution for any fiber termination. Complemented by field deployable connectors as a modern alternative to fusion splicing.

Fiber optic termination housing



Single dwelling unit (SDU)



Multi dwelling unit (MDU)

New generation FO-boxes

The Polaris-box family is the new generation of FO-boxes from R&M for a flexible fiber optic termination for indoor or outdoor applications. It extends R&M FTTH solutions in the customer connection segment and its area of application ranges from single-family homes to building complexes.

[Learn more](#)

Build for the future

The new Polaris-boxes are really multifunctional. In buildings, Polaris-boxes are suitable for entry points (BEP), riser zones, floor distributors up to the Optical Termination Outlet (OTO). They support patch, splice and splitter configurations as well as flexible and individual assembly. The new boxes enable network operators to quickly bridge the last meters into the buildings. At the same time, they secure options for the future.

Polaris-box 4

The Polaris-box 4 is the smallest in the family and fits even into tiny spaces. The basic configuration with one fiber inlay supports up to 12 crimp (ANT) or shrink (HS) splice connections. For plug connections, a coupling field for 2 or 4 SC, LC duplex or E-2000™ adapters is available.



030.6846



030.8773

Polaris-box 4

It's hard to believe, but the box offers space for an additional fiber storage under the first insert. If required, a second fiber inlay can be retrofitted.

Polaris-box 4 SCM

These solution offer space for quick splitter integration as well as the first twelve splice connections without additional FMTS trays. In addition, up to four FMTS-Compact splice trays can be retrofitted.

1

Flexible

Flexible assembly of splice trays for different applications.

2

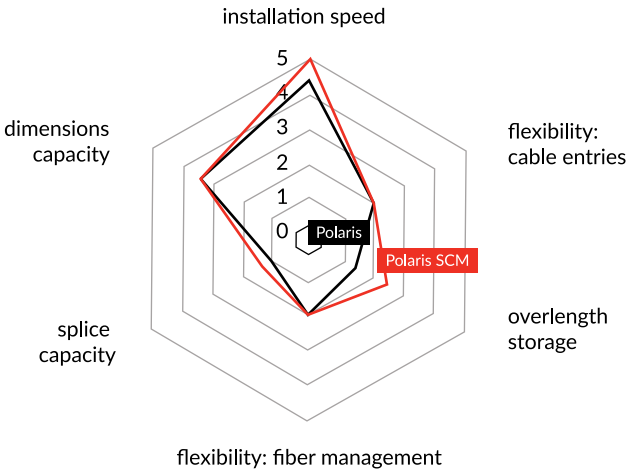
Direct access

Direct access to the individual fibers, fiber protection through additional tray cover.

3

Reliable installation

Simple and reliable installation, strain-relief for cable and micro-ducts.



Polaris-box 4



030.6847

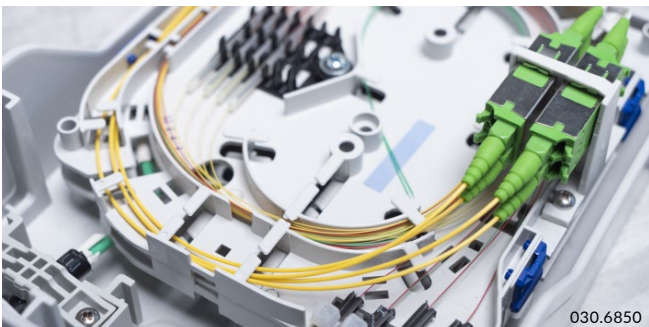
Fiber storage for loose tube.

Polaris-box 4 SCM



030.8751

Clear fiber and subscriber separation, 4x FMTS-Compact Splice tray retrofittable.



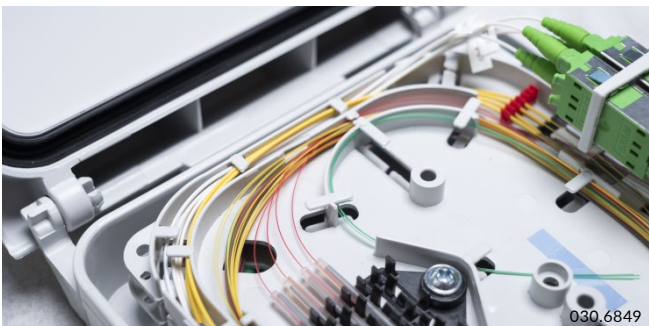
030.6850

More safety through separate fiber routing of 900-um and 250-um fibers.



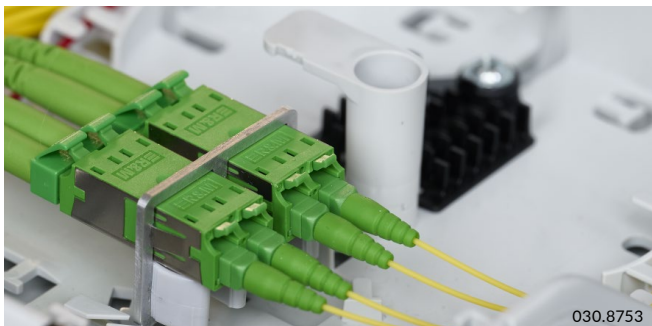
030.8752

Splice tray identification thanks numbering and color coding.



030.6849

Controlled bending radius. Access to individual fibers always guaranteed.



030.8753

Position for an additional adapter field.

Get more



Safety

Easy handling, optimal and stress-free fiber guidance.



Flexibility

Compact design, variable configurations, up to 12/24 splices and 4/8 connectors.

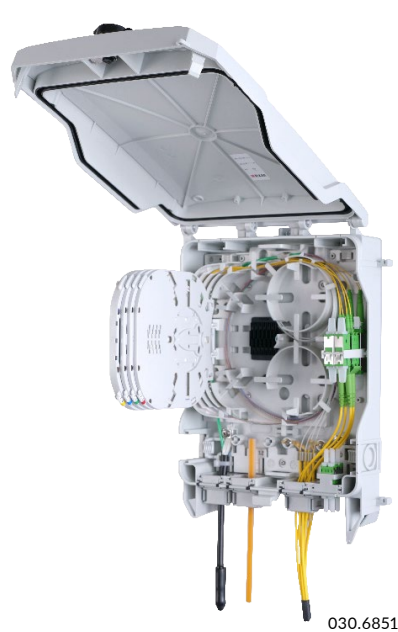


Efficiency

Uncomplicated cable migration, additional fiber storage and tool-free re-working.

Polaris-box 6

The Polaris-box 6 is the little all-rounder. The optical distribution box is suitable for indoor and outdoor use. The basic equipment of the Polaris-box has a fully integrated fiber management inlay for up to 12 splice connections and a splitter position.



Polaris-box 6

The Inlay has a fully integrated adapter field for up to six (12) SC, E-2000™ and LC duplex (SFF) adapters. In addition, it is possible to supplement the box with a maximum of four additional 1TPU splice trays (4/12 fibers) or two 2TPU splitter trays. The Polaris-box 6 can be modularly re-equipped with up to 60 splice connections.

Polaris-box 6 SCM

The fiber inlay can take up to six additional FMTS splice trays for a separation of subscribers or to increase the splice capacity. With a pure splice application, the splice capacity can reach up to 84 splice connections. For the patch splice application an adapter field for six SC, LC-D can be toolless implemented.

1

Direct access

Direct access to individual fibers, fiber protection through additional tray cover

2

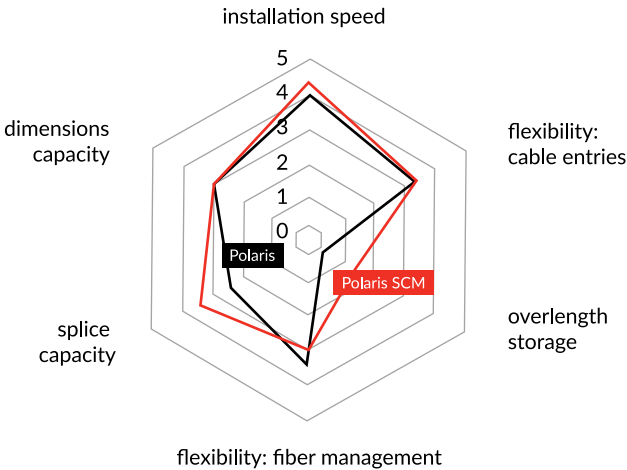
Reliable installation

Simple and reliable installation, cable or micro-pipe strain relief

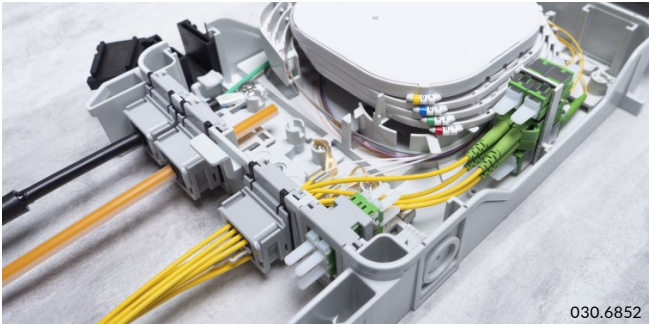
3

Flexible cable entries

Flexible cable entries for different cables and micro tubes

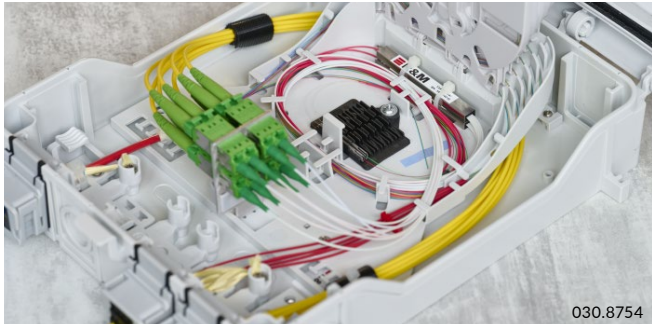


Polaris-box 6

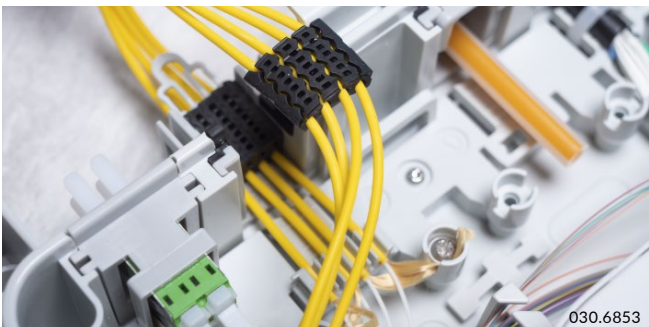


Cable entries on four sides and the rear side.

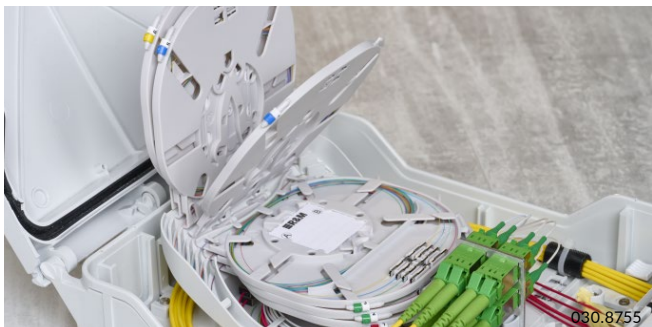
Polaris-box 6 SCM



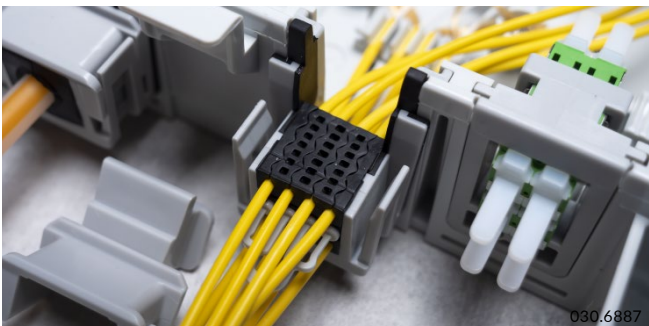
Basic Inlay for the first 12 splices including integrated Splitter fixing position.



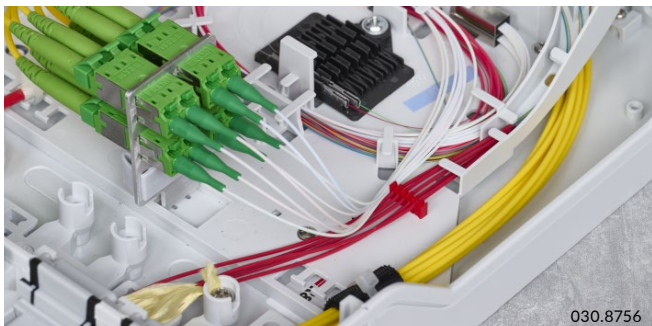
Multi-layer pre-cut cable sealing elements for an easy cable migration.



Up to 6x FMTS- Splice tray including Label for a fast fiber identification.



Access to adapters outside the housing, adapter field for two LC duplex, SC and E-2000™ connectors.



Safe fiber guidance for all the different fiber types.

Get more



Safety

Unique sealing concept, high housing protection class IP65 and guaranteed minimum radius of 30 mm.



Flexibility

Multifunctional platform, many retrofittable configurations, up to 60 (86) splices and 6/12 connectors.

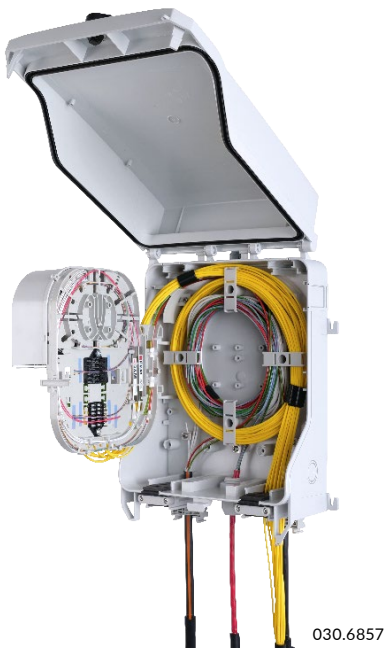


Efficiency

Fast, precise assembly, maintenance-friendly housing and tool-free handling.

Polaris-box 12/16

The Polaris-box 12/16 is a compact distribution box with plenty of space for many applications and additional space for a save fiber storage.



030.6857



030.8784

Polaris-box 16

The swiveling fiber inlay separates the connectors from the splice connections; this guarantees greater safety for the fiber connections. The bottom side can accommodate up to 24 splices and if required 3 splitters with a split ratio of 1:8 or 2:8. The top side offers space for 24 adapters or 2 pre-assembled LGX splitter modules.

Polaris-box 12 SCM

The fiber inlay can take up to 12 FMTS-compact splice trays with four ANT or HS splice protections per tray. The splice capacity can handle up to 48 splice connections on demand an adapter field for up to 6 SC, LC-D connectors can be retrofitted.

1

Secure fiber storage

Sufficient space for secure fiber storage for loose tube and drop cables

2

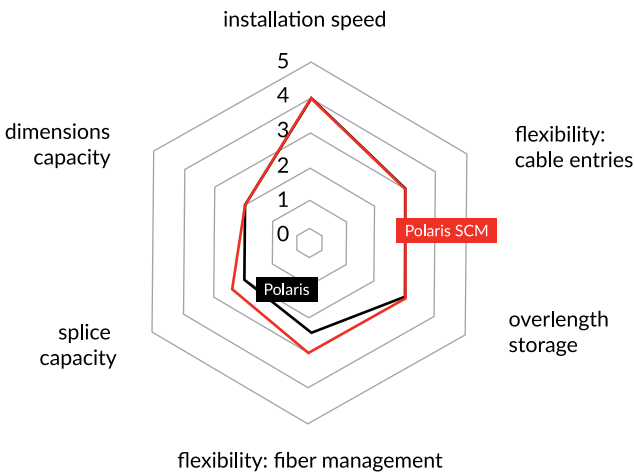
Quick access

Quick access to the connectors, protection for the fiber pigtail through the cover

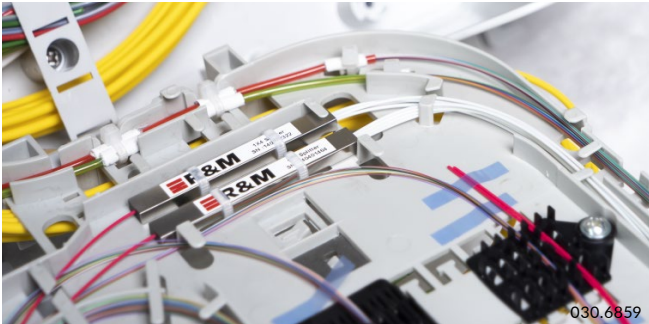
3

Separate splicing area

Separate splicing area with optional space for splitter applications



Polaris-box 16



030.6859

Position for fanout and bare fiber splitter applications.

Polaris-box 12 SCM



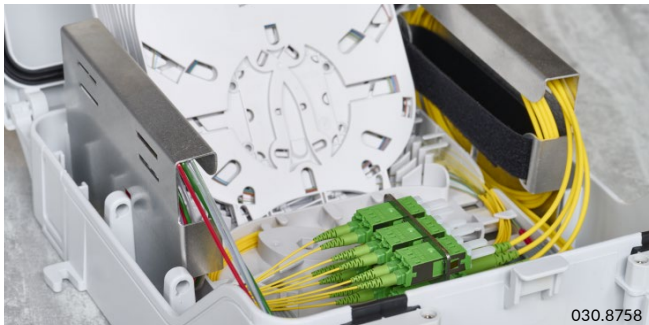
030.8757

Basic Inlay for up to 12 FMTS compact splice trays.



030.6860

Robust and flexible cable entries.



030.8758

Optional fiber overlength storage



030.6858

Cover for optimal protection of the pigtail fibers.



030.8759

Fiber crossing from the left to the right side.

Get more



Safety

Separate sides for splice and patch connections, additional fiber protection through end caps and secure storage for bundled and drop cables.



Flexibility

Easy network migration, 2 retrofittable LGX splitter modules, up to 24 splices and 16/24 connectors



Efficiency

Compact and cost-optimized, pivoting fiber inlay and user-friendly design.

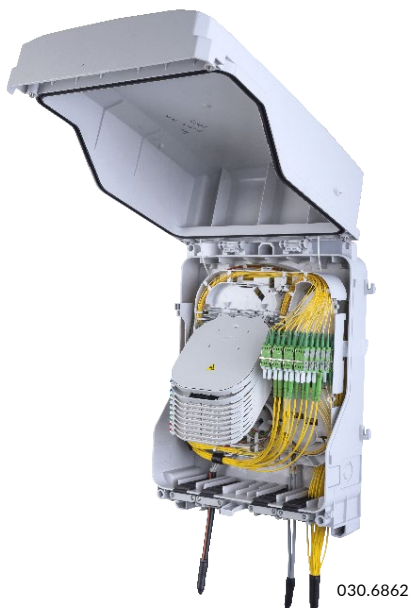


A detailed close-up of a fiber optic patch panel. Multiple yellow fiber optic cables are plugged into green LC connectors. The cables are bundled together and run through a white plastic frame. In the background, there are other components like a metal bracket and a label with technical specifications.

Safe. Flexible. Efficient.

Polaris-box 24

The Polaris-box 24 is a versatile fiber optic termination box. With the FMTS (Fiber Management Tray System) trays, subscribers or the required number of fibers can be securely managed. Thanks to the sealing elements, up to 8 round cables or tubes with a diameter of 3 - 16 mm or a multiple of drop cables of 2 - 5 mm can be inserted into the box flexibly and without threading through a grommet.



Polaris-box 24

Polaris-box 24 has a swivel-mounted fiber inlay it offers space for 12 TPU (Tray Position Units), which can be individually equipped with splice or splitter trays. Up to 144 splices are possible when fully loaded with 12-fiber 1TPU splice trays. Up to 24 SC, E-2000™ or LC duplex adapters or 48 LC connection is packed by.



Polaris-box 24 SCM

The fiber inlay hold up to 24x FMTS 30 splice trays or support a splice capacity up to 288 splice connections. Optional a Patch field for up to 12 SC, LC-D adapter is available. The fiber storage can be retrofitted either to the left or right next to the splice trays. These allow save storage of loose tubes and additional drop cables. For the patch splice application an adapter field for six SC, LC-D can be toolless implemented.

Polaris-box 24



Swiveling fiber inlay for safe separation of incoming and outgoing fibers.

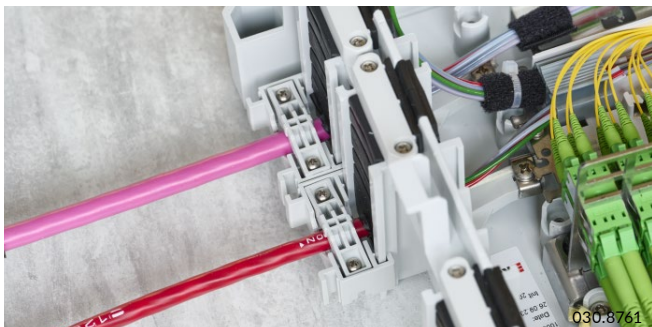
Polaris-box 24 SCM



Individual fiber management with several FMTS splice tray.



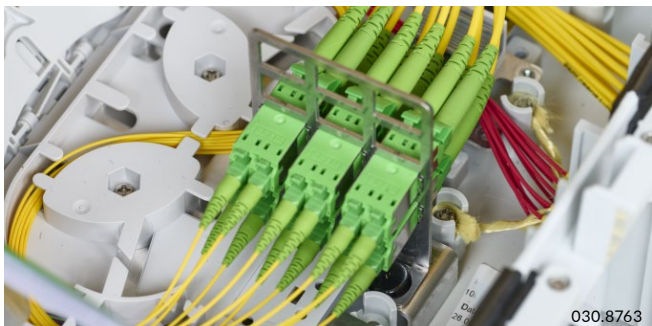
Ample space for generous bundle and drop cable storage.



Proper cable strain relief in out- and inside of the box.



Safe laying of the fibers with gentle bending radius.



Tool free patch field mounting for LC-D, SC adapters.

1

Secure fiber storage

Splitter position for bare fiber splitter

2

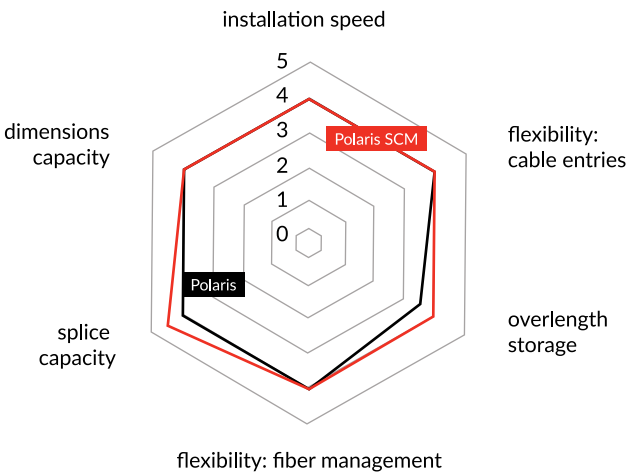
Separate area

Separate area for splices and connectors

3

Flexible assembly

Four cable ducts for flexible assembly of the sealing elements



Get more



Safety

Simple assignment of fibers and subscribers, separation between splicing, patching, and splitting applications and clear assignment of fiber paths.



Flexibility

Fast network expansion, variable assembly of 1TPU/2TPU trays up to 144 splices and 24/48 (LC) connectors.

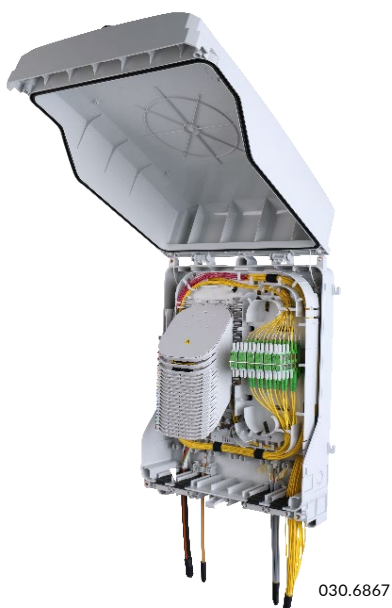


Efficiency

Generous fiber storage, compact design, and optimal operability.

Polaris-box 36

The robust and highly compressed Polaris-box 36 is multifunctional. In order to cope with these fiber quantities, 6 break-out cable entry slots can be equipped with the pre-slotted sealing elements in a customer-specific and modular way. Up to 12 cables or tubes up to 16 mm diameter or 144 subscriber or drop cables with 2 – 3 mm diameter can be inserted.



Polaris-box 36

The top side of the fiber inlay has two separate areas for splice and plug connections. On the left side up to 24 FMTS cassettes can be equipped with splice or splitter trays. A maximum of 288 splices can be realized with the 12-fiber 1TPU splice cassette when fully equipped.

Polaris-box 36 SCM

The inlay has a fiber capacity for up to 36 FMTS-30 splice trays and an easy (click-on) mountable adapter bracket for 18/36 patch connections (SC, LCD). The modular, as set available overlength brackets allow an easy storage of loose tube (loop) or drop cable overlengths.

1

Safe fiber administration

Guaranteed access to individual fibers, well protected in the FMTS tray system

2

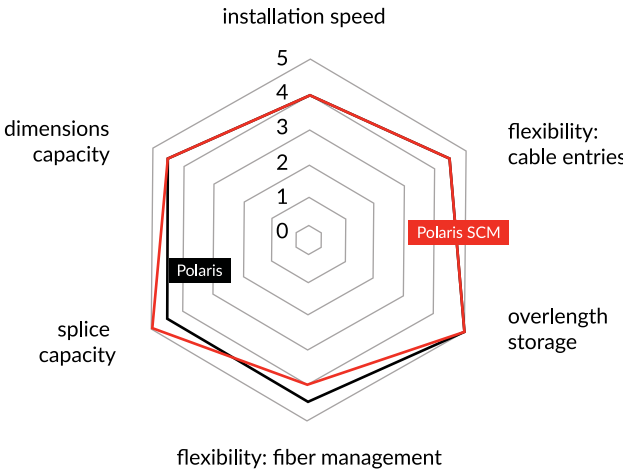
Separate area

Separate area for splices and connectors

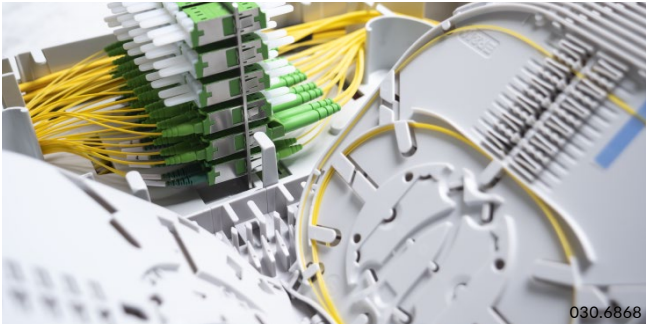
3

Easy extension

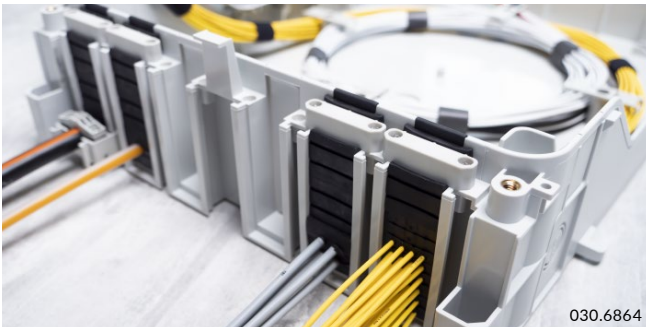
Flexible break-out cable entry slots allow an expansion or extension according



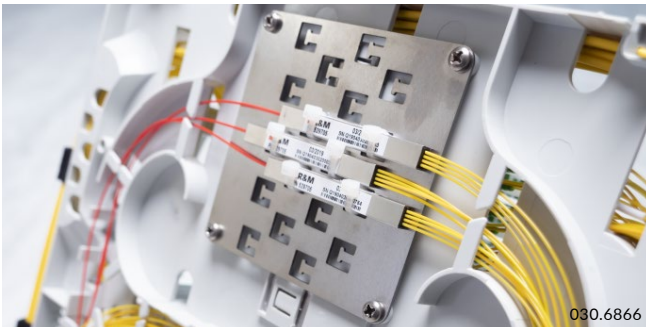
Polaris-box 36



Clear separation between splice and patch area guarantees optimal management of fiber connections.

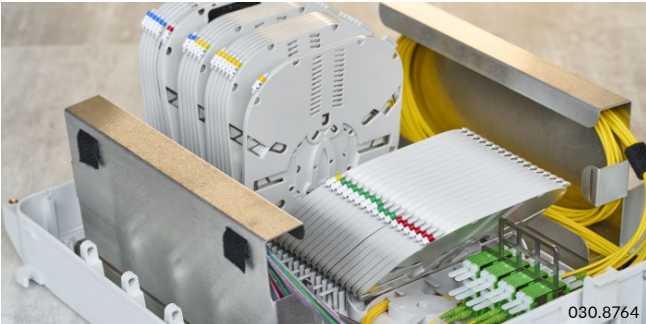


Highest flexibility for cable and tube feeding



Protected area for up to 9 fanout splitters 1:8 on the underside of the fiber inlay.

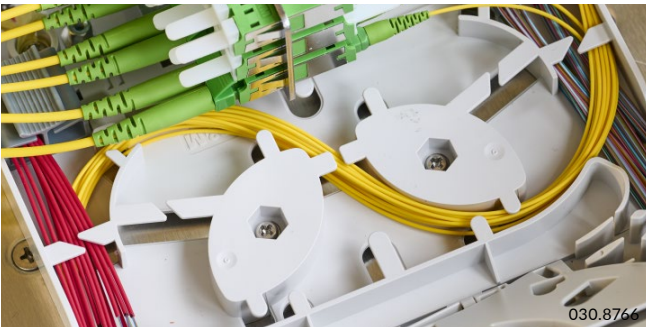
Polaris-box 36 SCM



Maximal splice capacity or subscriber separation.



High fiber overlength storage.



Safe fiber guidance for all the different fiber types.

Get more



Safety

Simple assignment of fibers and subscribers, separation between splicing, patching, and splitting applications and clear assignment of fiber paths.



Flexibility

Fast network expansion, variable assembly of 1TPU/2TPU trays up to 144 splices and 24/48 (LC) connectors.

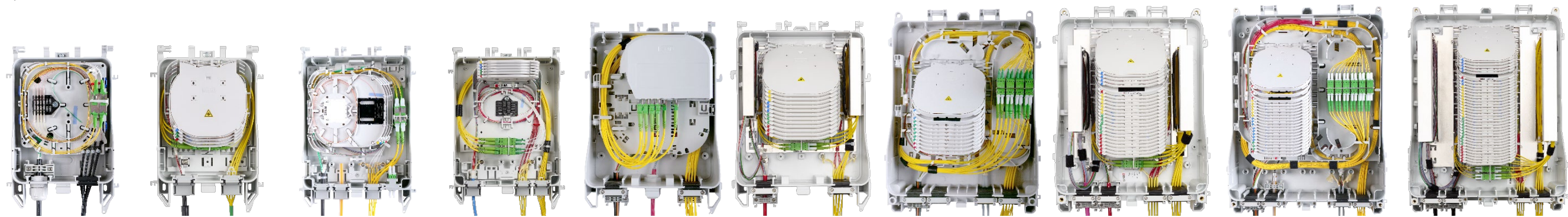


Efficiency

Generous fiber storage, compact design, and optimal operability.

Overview

Polaris-box family



	Polaris-box 4	Polaris-box 4 SCM	Polaris-box 6	Polaris-box6 SCM	Polaris-box 16	Polaris-box 12 SCM	Polaris-box 24	Polaris-box 24 SCM	Polaris-box 36	Polaris-box 36 SCM
Protection class	IP65	IP65	IP65	IP65	IP65	IP65	IP65	IP65	IP65	IP65
Nº of adapters E-2000, SC, LC-Duplex	2 or 4	2 or 4	6	6	16/24	6	24	12	36	36
Nº of splices	12...24	12...28	12...60	12...84	12...24	4...48	12...144	12...288	12...288	12...432
Nº of FMTS-30 trays	-	-	4	6 (no adapters)	-	-	12	24	24	36
Nº of FMTS compact trays	-	4	-	6	-	12	-	24	-	36
Nº of splices FMTS	-	4	4/12	4/12	-	4	4/12	4/12	4/12	4/12
Nº of cable inserts top/side	2 only side entries	2 only side entries	2/2	2/2	2/2	2/2	2/2	2/2	2/2	2/2
Nº of cable inserts below	2	2	4	4	4	4	8	8	12	12
Main cable inserts	1 x Ø 3-13mm	1 x Ø 3-13mm	1 x Ø 3-13mm	1 x Ø 3-13mm	1 x Ø 3-16mm	1 x Ø 3-16mm	1 x Ø 3-16mm	1 x Ø 3-16mm	1 x Ø 3-16mm	1 x Ø 3-16mm
Drop cable inserts, round	12 x Ø 2-3mm	12 x Ø 2-3mm	12 x Ø 2-3mm	12 x Ø 2-3mm	16 x Ø 2-3mm	16 x Ø 2-3mm	16 x Ø 2-3mm	16 x Ø 2-3mm	16 x Ø 2-3mm	16 x Ø 2-3mm
Drop cable inserts, Butterfly	-	-	-	-	16 x 2-3mm	16 x 2-3mm	16 x 2-3mm	16 x 2-3mm	16 x 2-3mm	16 x 2-3mm
Drop cable inserts	8 x 4-5mm (IP55 only)	8 x 4-5mm (IP55 only)	8 x 4-5mm (IP55 only)	8 x 4-5mm (IP55 only)	4 x 4-5mm	4 x 4-5mm	4 x 4-5mm	4 x 4-5mm	4 x 4-5mm	4 x 4-5mm
Overlength storage	● ● ●	● ● ●	-	-	● ● ● ● ●	● ● ● ● ●	● ● ● ● ●	● ● ● ● ●	● ● ● ● ●	● ● ● ● ●
Extendibility	● ● ●	● ● ●	● ● ●	● ● ●	● ● ●	● ● ●	● ● ● ● ●	● ● ● ● ●	● ● ● ● ●	● ● ● ● ●
Splitter application	● ● ●	● ● ●	● ● ●	● ● ●	● ● ● ● ●	● ● ● ● ●	● ● ● ● ●	● ● ● ● ●	● ● ● ● ●	● ● ● ● ●
Collocation	● ● ● ● ●	● ● ● ● ●	● ● ● ● ●	● ● ● ● ●	● ● ● ● ●	● ● ● ● ●	● ● ● ● ●	● ● ● ● ●	● ● ● ● ●	● ● ● ● ●
Size	compact	compact	small	small	small / medium	small / medium	medium	medium	medium / large	medium / large

FTTX Portfolio

« **R&M products are stable,
user-friendly and of
premium quality** »

Felix Neukom, Head of FO, Instakom AG



Connectivity

Indoor FO Cable



Optical Distribution
Frames



Raceway



Fast Reel Outlet Box



Polaris-box Family:
Outdoor & Indoor
Distribution
Termination
Building Entry Point



3U-Modules

Buildings



Mechanical Gel sealed
SYNO Closures



Heat-shrink
Dome Closures



19" Panels



Heat-shrink
Dome Closure Flex



Customized Street
Cabinets



Cable Assemblies

Outside Plant

Central Office

Connectivity that matters

Network technology from R&M guarantees decisive advantages. Users experience the benefits when they install cabling systems from R&M effortlessly and when they use infrastructure solutions from R&M for generations without interruption.

High-end since 1964

R&M has been developing and manufacturing high-end connecting and distributive technology since 1964. R&M customers around the world use it to design future-proof data and communication networks for public and private applications.

Independent Swiss family company

As an independent Swiss family company, R&M is one of the world's leading suppliers of infrastructures for telecom networks, data centers, offices and building automation. R&M covers the entire range of copper-based and fiber optic connectivity. The system approach integrates support, design and turnkey concepts for sites, buildings and housings. Software for network management rounds out the portfolio.

Connecting people and businesses

Connectivity that matters represents decisive progress. With great innovation, R&M provides unlimited and reliable network infrastructure that connects people and businesses across the world. Together with certified partners, R&M carries out pioneering work.

Superior performance

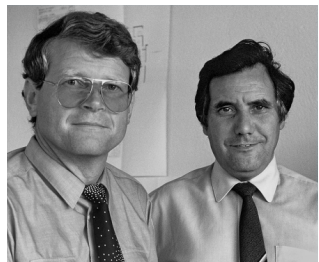
Clients who opt for R&M invest in sustainably reliable, scalable and migration-capable infrastructures. The result: networks with guaranteed, measurably superior performance.

Global reach

R&M tailors its product offerings and performance precisely to the needs of its customers. With 14 plants at international locations, logistics hubs, sales organizations and technical consultants, R&M remains close to its customers on every continent.



R&M Cube, the company's state-of-the-art headquarters in Wetzikon, Switzerland



In 1964, Reichle & De-Massari AG (R&M) was founded by Hans Reichle & Renato De-Massari.



The garages and homes of the Reichle family in Wetzikon and the De-Massari family in Pfaffhausen served as offices, workshops and warehouses.

What we stand for

Quality

Every bit reaches its goal

Innovation

Excellent and effortless wiring

System warranty

Lifelong commitment

Protection of investment

Install just once and enjoy permanent use

Customer focus

Responsible experts on site

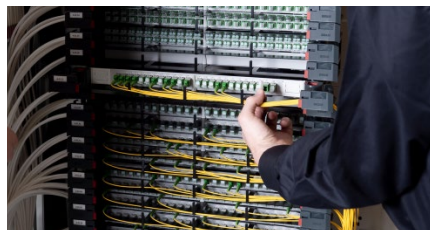
Sustainability

Man, nature and the market in harmony

Support that matters

Project success is determined by the network of project partners. The best data and communication networks are the result of good collaboration. That is why R&M resolutely forges close partnerships all over the world. Whether for individual projects and markets or for permanent, comprehensive commitment. Ideally, R&M starts off by advising investors, general contractors, planners, and installers on the special issues of the project. Subsequent support extends from the design to the commissioning of the network.

It includes evaluation, configuration, customizing, logistics, installation training and measurements. R&M also supports partners on site in downstream tasks such as infrastructure management. The global R&M network comprises proprietary sales offices and specialist consulting, plants, warehouses as well as certified distributors and partners. R&M products are available locally to partners and customers in more than 100 countries.



Lead: R&M makes partners insiders

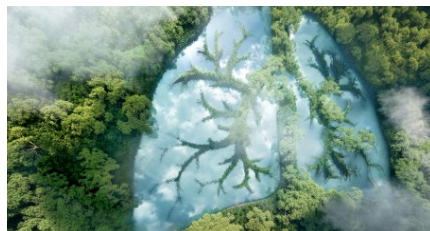
Planners, project managers and installers gain practical insider knowledge in workshops and webinars. R&M provides information on technologies, solutions and standards. The participants share their experiences.

Expertise: R&M certifies professionals

Network and cabling professionals take part in the R&M Academy Qualified Partner Program (QPP). They receive exclusive certifications. QPP partners receive comprehensive technical support for their projects.

Warranty: R&M provides security

R&M assumes joint responsibility within the scope of its international warranty program. It includes a 25-year system warranty and a lifetime application warranty for fully tested cabling.



Sustainability: R&M represents values

R&M maintains the balance between economic, ecological, and social interests on the basis of exemplary ethical values. Ever since it was founded, sustainability has shaped the family business. The plan is to halve CO2 emissions by 2030, and to achieve full climate neutrality by 2050.



Success: meaningful case study publications

R&M continuously documents case studies in informative reports. The case studies developed together with partners and customers give valuable insight into network technology for interested parties around the globe.



Headquarters

Switzerland
Reichle & De-Massari AG
Binzstrasse 32
CH-8620 Wetzikon

www.rdm.com

Please choose your
country on our global
website.



BCH_Polaris-box_Family_06.02.2024_EN_HQ
© Reichle & De-Massari AG - All rights reserved

