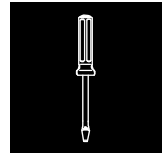


# Installationsanleitung Anschlussmodul Kat.6<sub>A</sub> EL

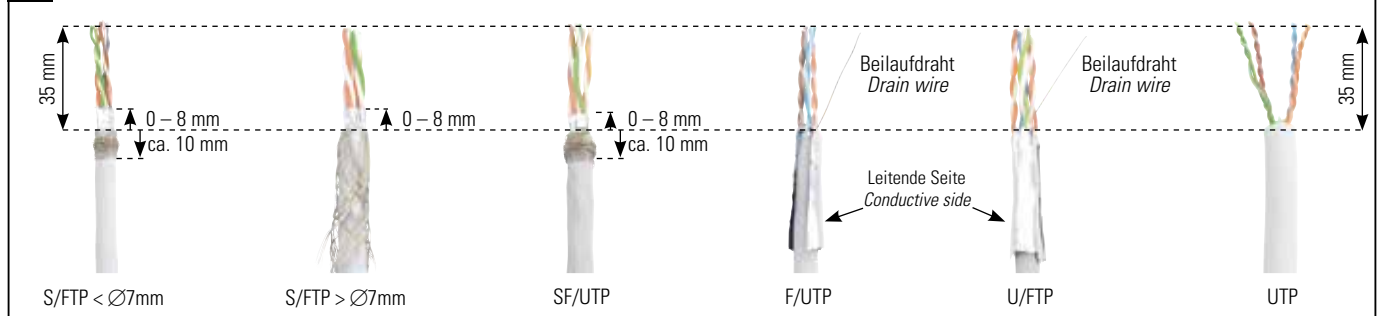
## Installation guide Connection Module Cat.6<sub>A</sub> EL

### Instructions de montage Module de raccordement Cat.6<sub>A</sub> EL



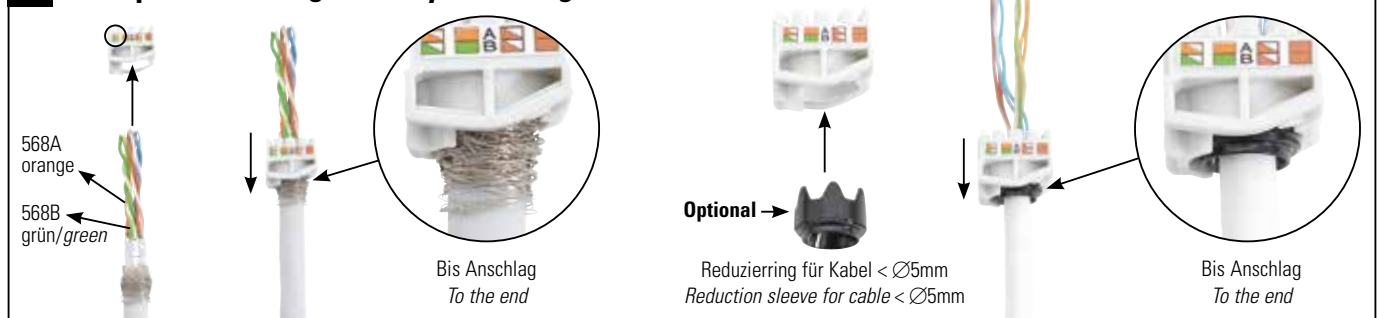
#### A Kabelvorbereitung / Cable preparation

021.3071 – 021.3076



#### B Kabelpositionierung / Cable positioning

021.3077 – 021.3080



#### C1 Adern nach Farbcode einlegen / Insert wires according to color code



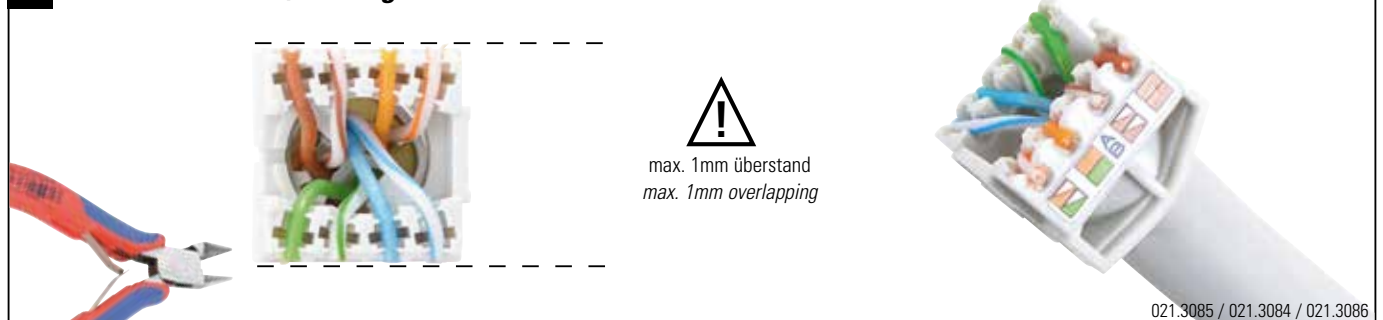
021.3083

021.3082 / 021.3081

021.3087

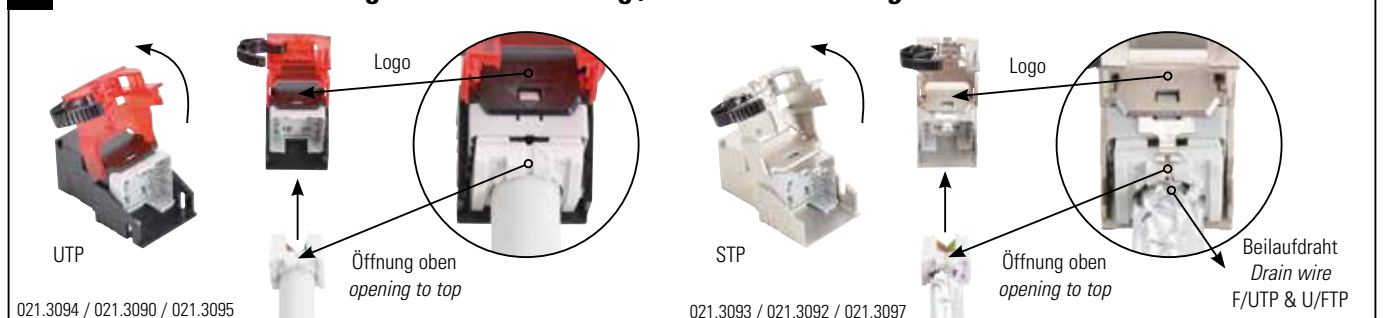
021.3088

#### C2 Adern schneiden / Cutting wires



021.3085 / 021.3084 / 021.3086

#### D Modul- und Beschaltungsblock Ausrichtung / Module and wiring block orientation



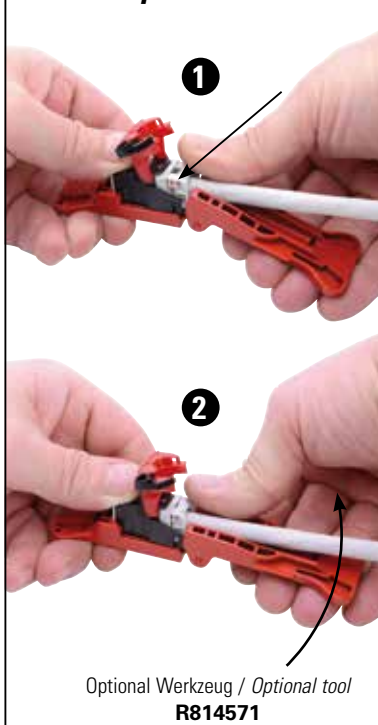
021.3094 / 021.3090 / 021.3095

021.3093 / 021.3092 / 021.3097

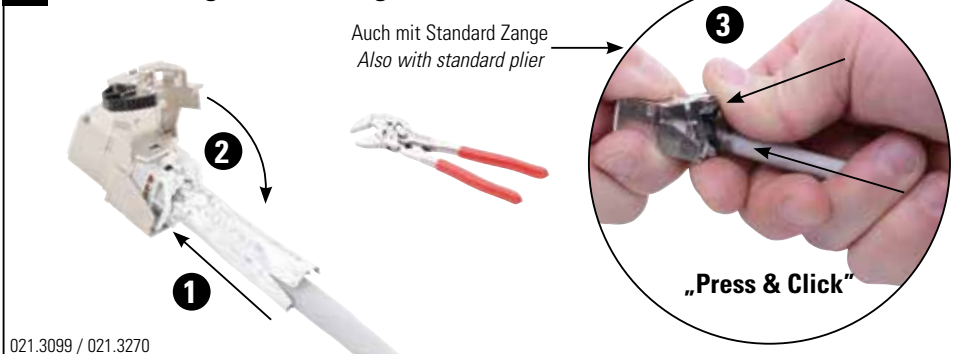
### E1 Beschaltung UPT / Wiring UTP



### F Optional Werkzeug / Optional tool



### E2 Beschaltung STP / Wiring STP



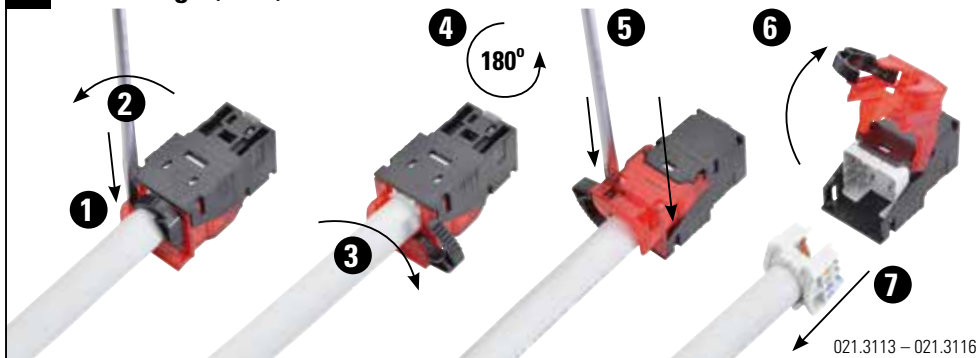
### G1 Zugentlastung & Schirmabnahme / Strain relief & earthing



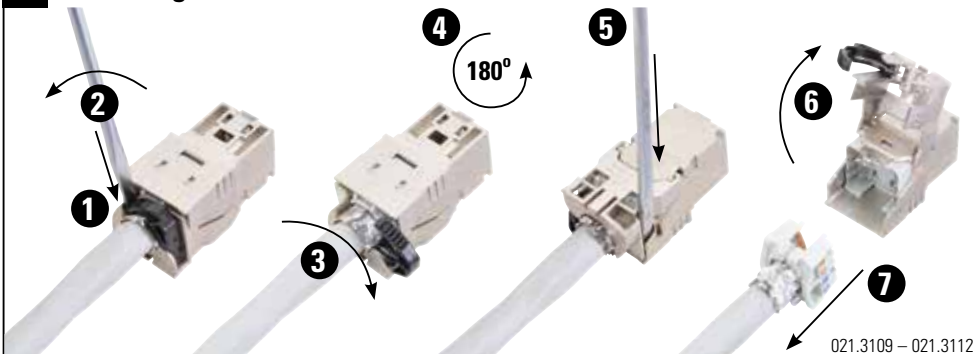
### G2 \* Optional Werkzeug / \* Optional tool



### H1 Demontage (UTP)



### H2 Demontage (STP)



### Headquarters

#### Switzerland

Reichle & De-Massari AG  
Binzstrasse 32  
CHE-8620 Wetzikon  
Telephone HQ +41 (0)44 933 81 11  
Telefax HQ +41 (0)44 930 49 41  
E-Mail hq@rdm.com

www.rdm.com

