

MEDIA RELEASE

R&M introduces custom design service to make non-R&M patch panels intelligent

Patch panels from any vendor can now be equipped with intelligence.

Wetzikon, Switzerland, November 10, 2020. R&M, the global Swiss developer and provider of connectivity systems for high-quality, high-performance network infrastructures, has just launched its IntelliPhy Brownfield Service customization program for patch panels from any vendor. This offers IT, infrastructure managers, a unique opportunity to upgrade already deployed non-R&M physical network infrastructure with a Smart Networks IoT layer.

R&M's Smart Networks architecture brings intelligence and automation to physical network infrastructures. Regardless of the structured cabling vendor used for an existing installation, the IntelliPhy Brownfield Service delivers a real-time holistic view of the network and its connectivity. Users don't only benefit from an IoT-layer custom-designed to their infrastructure as well as DCIM software that makes it possible to locate and identify all equipment on the network and track all network changes. An ideal solution for large-scale multi-vendor networks in the areas of pharma, airport, government, banking, and colocation. All connectivity documentation data and essential workflows, such as patching activity, are presented in a single DCIM platform. This reporting also helps facilitate audits.

Intelligence and automation for all physical infrastructures

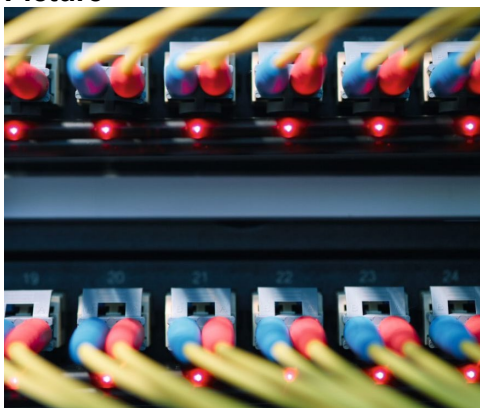
«R&M's engineering team is on a mission to transform the entire industry,» states Andreas Rüsseler, CMO. «Creativity can be unleashed to the highest level thanks to the infinite possibilities for customizing our RFID-based IoT layer to your existing patch panels. R&M's Smart Networks breakthroughs are impacting IT infrastructure teams everywhere, helping them work faster, better, and smarter. For example, the solution can provide feedback on job execution. One of the most recent IntelliPhy Brownfield Service engineering jobs has

been a truly unique adaptation for one of the world's largest pharma corporations, which doesn't use R&M trunk cabling or patch panels.»

Projects with 300 panels or more can be serviced. During an initial three-week Feasibility Phase, panels provided by the customer are integrated. This is followed by a six-week Prototyping Phase concluded by acceptance tests on the customer site with a fully working prototype. The final production is completed within a month.

If you would like to know more or find out how you could benefit from R&M's IntelliPhy Brownfield Service customization program, please visit www.rdm.com/Services/inteliPhy-Brownfield-Service

Picture



R&M's Smart Networks architecture brings intelligence and automation to physical network infrastructures

About R&M

R&M (Reichle & De-Massari AG) is a leading global producer of future-proof products and systems for communication and data networks. The company's close collaboration with certified partners results in pioneering connectivity solutions in the sectors LAN, Public and Telecom Networks as well as Data Centers. The Swiss family company stands for innovation, quality, and proximity to customers. More information can be found at www.rdm.com

Press and media contact

Reichle & De-Massari AG (R&M), René Eichenberger, Corporate Communications,
Binzstrasse 32, CHE-8620 Wetzikon, Switzerland. Phone: +41 44 933 82 85
e-mail: rene.eichenberger@rdm.com